

Aggressive Risk Management **in Action**



Cities Insurance Association of Washington

**Risk
Control
Services**

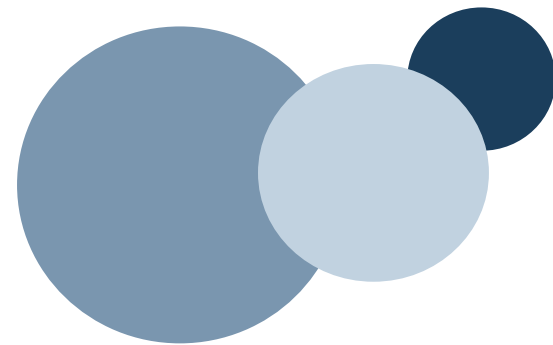
Reducing Risk . . .

predict and prevent

Setting Us Apart

Risk Management is the process of identifying potential risk and mitigating the prospective loss. Using the latest innovative techniques and practices, the risk control team provides a personalized risk control product tailored specifically for your entity. Risk control personnel take the extra time to understand the individual environment within each account. Our staff goes the extra mile to provide warm, compassionate and friendly service. Each risk control team member is an industry-trained professional, with a broad sense of risk control for public entities. In addition, each has a specialized area of expertise that provides value added service. Sound risk management is the backbone for the tremendous success the Cities Insurance Association of Washington (CIAW) has enjoyed for years. The utilization of our vast risk management resources will help bring awareness to those who have the most loss potential to reduce impact for your entity and staff. This aggressive, but proactive, approach keeps losses to a minimum, while maintaining high quality services, broad coverage and competitive rates.

All risk control services are elective and available to every member, regardless of size or premiums. Recommendations are made with sensitivity to budgets and entity needs, while maintaining flexibility in implementing recommendations. To schedule any risk control service, contact our office. **800-407-2027.**



Law Enforcement

Our law enforcement team has over 100-years of combined law enforcement experience, including administration, corrections, patrol, special operations and EVOC. This review includes comprehensive reviews and recommendations to your department's operations manual, high-risk procedures, personnel, corrections, protection equipment, and evidence storage areas. With civil rights violations against law enforcement at an all time high, our team can help you avoid the courtroom. This unique process reviews your agency, not only from industry standards, but also from a liability management viewpoint, enabling your entity to foresee areas of potential litigation.



Fire/Rescue/EMS

Using industry professionals who have fire/rescue/EMS backgrounds, the CIAW is able to offer services which go far beyond your usual standardized risk management plans. Our team can undertake a detailed review of your department's operations manual, high risk procedures, personal protection equipment, training, firefighting equipment, facilities, application forms and many other resources designed specifically for fire and EMS departments.

Fleet Management

This three-part process begins by conducting a risk analysis of your entity's fleet operating procedures, training and guidelines. In addition, entities will receive a fleet management safety manual that applies best practices for fleet management. The end result will be a working document, which will provide your entity with helpful tools to help predict and prevent losses. Fleet management can also include defensive driving workshops provided on site, and the use of the driver training simulator (DTS).

Public Works

Public Works risk control provides a technical analysis of all operations within the public works department. This includes streets, water, sanitation, waste water and treatment. Detailed proactive maintenance within your facilities is paramount to the overall safety of your operations. This service has proven to show a reduction in claims and losses.

Streets, Sidewalks and Signage

This program will provide your entity with an accepted industry approach in managing streets, sidewalks and signage. This program incorporates the latest Washington State case law and is designed to make implementation simple and straightforward. A review of your management process and maintenance procedures will be a proactive approach to prevent losses to your entity.



Parks and Recreation

This service will focus on parks and recreation programs within your entity, including: city-sponsored events, parks, playgrounds, aquatic facilities, athletic fields, and specialized areas of recreation, such as: golf courses, boat launches, etc. These services are provided by industry professionals with extensive knowledge and experience in these areas.

Facility Review

This is a hands-on broad encompassing on-site review. In order to identify areas of potential loss, a thorough inspection of your facilities, lighting, theft potential, vandalism, fire hazards, trip and falls, alarm systems, fire suppression systems, detection systems and other facility exposures will be reviewed. This is a service all entities could benefit from.

Risk Management Assistance Online

This is an E-mail service designed to be convenient and easy to use. When a risk control issue arises and you need assistance, you can simply E-mail **riskhelp@canfield-associates.com**. You will be contacted with a response immediately.



Cities Insurance Association of Washington

All Risk Management services are performed by the Canfield & Associates Risk Management team comprised of experienced, educated and certified risk managers. Utilizing industry proven professionals, our risk control team provides unparalleled expertise to our members.



Wayne Barnhart
Risk Control
Representative



Steve Grout
Risk Control
Representative



Paul Harrison
Risk Control
Representative



John Heston
Risk Control
Representative



Shane Heston
Risk Control
Manager



Scott Kellams
Risk Control
Representative



Dick Langum
Risk Control
Representative



Michelle Moss
Administrative
Assistant



Aaron Sheneman
Risk Control
Representative



William Wiester
Law Enforcement
Risk Control
Representative



Larry Yount
Traffic Safety
Specialist



**Third Party
Administrators**

Property and Casualty Insurance Programs

Canfield & Associates

451 Diamond Drive
Ephrata, WA 98823
509.754.2027
800.407.2027
Fax: 509.754.3406

www.canfield-associates.com